



“中国体育彩票”2023年全国女子手球锦标赛

常州工学院体育馆

Preliminary



FTR
Match NO.9

上海 39.5 - 27.5 北京
(20.0-15.5)(19.5-12.0)

2023-10-16 13:00
常州工学院体育馆

Referees: 马安兴(CHN) / 巩志超(CHN)

上海

Players		Goals/shots										Attack			Defense			Penalties			TP				
#	Surname and name	Tot.	%	9m	6m	Wing	7m	Fst.	Brk.	FT	LD	As.	PC	E7	OE	St.	C7	Blk	W	2m		D	Dr		
1	丛蓉											1												21:13	
2	周蕾	2/3	66.67		2/3																			25:43	
3	江馨彤	1/2	50		1/2																			16:20	
5	王嘉怡	6/8	75		3/5			1/1	1/1		1/1	1		2	1									54:18	
7	张嘉悦																							03:42	
8	张萍萍	8/10	80		1/1	2/2		2/4	2/2		1/1						2							45:03	
9	郑雅楠	0/1	0			0/1								1	1				1					22:41	
11	刘心怡	0/1	0						0/1								1							05:42	
12	戴雨婷																							24:03	
13	魏鑫鑫	1/3	33.33	0/2					1/1															05:42	
15	庄徐蕊	5/8	62.5	0/3	4/4				1/1			1	1	1										54:18	
16	段长瑞																							14:44	
19	吴曼语	2/7	28.57		0/1	0/2		2/4				1		2	1			1						43:01	
21	张乐莹	1/1	100				1/1											1						14:56	
23	张艺														1									01:59	
28	杨奚琦	9/15	60	4/9	1/1		2/2	0/1	1/1		1/1	1		1	1									54:18	
	合计	35/59	59.32	4/14	12/17	2/5	3/3	5/10	6/7		3/3	4	2	3	7	3	3	1	1						06:47:43

Goalkeepers		Saves / shots										TP
#	Surname and name	Tot.	%	9m	6m	Wing	7m	Fst.	Brk.	FT	LD	
1	丛蓉	3/13	23.08	0/1	2/6		0/1	0/2	0/1	1/2		21:13
12	戴雨婷	6/12	50	1/3	2/2	1/1	0/1	0/1	2/4			24:03
16	段长瑞	2/11	18.18	0/1	1/4	0/2	1/1	0/2	0/1			14:44
	合计	11/36	30.56	1/5	5/12	1/3	1/3	0/5	2/6	1/2		01:00:00

Jersey number Tot. Total shooting 6m 6m shooting 9m 9m shooting Wing Wing shooting Fst Fastbreak 7m 7m Throw
 Brk. Breakthrough LD Long distance shooting As. Assists E7 Earned 7m St. Steals 2m 2-minute suspension C7. Received 7m
 D Disqualification Dr Disqualification+Report FT Free Throw PC Pass clear chance OE Offensiven Errors TP Time played W warning
 Blk. Block



“中国体育彩票”2023年全国女子手球锦标赛

常州工学院体育馆

Preliminary



Match Team Statistics
Match NO.9

上海 39.5 - 27.5 北京
(20.0-15.5)(19.5-12.0)

2023-10-16 13:00
常州工学院体育馆

Referees: 马安兴(CHN) / 巩志超(CHN)

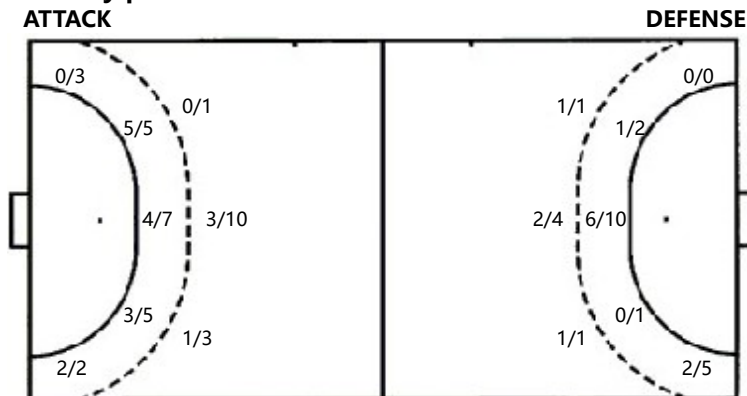
Shot distribution by player

1.丛蓉	2.周蕾	3.江馨彤	5.王嘉怡	7.张嘉悦	8.张萍萍	9.郑雅楠
	1/1 1/1					
					2/2 1/2 3/3	0/1
		1/1	4/4 1/1			
11.刘心怡	12.戴雨婷	13.魏鑫鑫	15.庄徐蕊	16.段长瑞	19.吴曼语	21.张乐莹
		1miss	1miss		1post	
0/1			1/1 2/2		0/1 1/2	
			1/1 1/2		1/2 0/1	
		1/1				1/1
23.张艺	28.杨奚琦	.合计	1post 1miss		1miss	
	2/2 0/1 2/2	3/3 1/2 5/5				
	0/1	3/6 0/1 3/6				
	3/5 2/2	10/14 5/5 5/7				
	2post	4post 6miss				

Saves distribution goalkeepers

1.丛蓉	12.戴雨婷	16.段长瑞	.合计
0/2	2/2		2/4
	0/1 2/2 1/1		0/1 2/2 3/5
1/3 0/1 0/3	1/3	1/4 0/1 1/5	3/10 0/2 1/10

Shots by position



Shooting statistics

Position	Goals	Save	Miss	Post	Blk	Total	%
9m	4	4	3	3		14	29
6m	12	2	3			17	71
边射	2	3				5	40
7m	3					3	100
快攻	5	4		1		10	50
突破	6	1				7	86
任意球							
超远射	3					3	100
合计	35	14	6	4		59	59

7m penalties	3/3	7m penalties	2/3
Fastbreak	5/10	Fastbreak	5/5
Breakthrough	6/7	Breakthrough	4/6
Long dist.	3/3	Long dist.	0/0
Free Throw	0/0	Free Throw	1/2

Jersey number Tot. Total shooting 6m 6m shooting 9m 9m shooting WingWing shooting Fst Fastbreak 7m 7m Throw
 Brk. Breakthrough LD Long distance shooting As. Assists E7 Earned 7m St. Steals 2m 2-minute suspension C7. Received 7m
 D Disqualification Dr Disqualification+Report FT Free Throw PC Pass clear chance OE Offensiven Errors TP Time played W warning
 Blk. Block



“中国体育彩票”2023年全国女子手球锦标赛

常州工学院体育馆

Preliminary



Match Team Statistics
Match NO.9

上海 39.5 - 27.5 北京
(20.0-15.5)(19.5-12.0)

2023-10-16 13:00
常州工学院体育馆

Referees: 马安兴(CHN) / 巩志超(CHN)

北京

Players		Goals/shots										Attack				Defense			Penalties			TP		
#	Surname and name	Tot.	%	9m	6m	Wing	7m	Fst.	Brk.	FT	LD	As.	PC	E7	OE	St.	C7	Blk	W	2m	D		Dr	
1	王海叶																							00:00
5	常凯璇	2/2	100		1/1			1/1																26:35
7	赵荣鑫	2/4	50		1/2			1/1	0/1															58:53
8	徐慧敏	2/3	66.67		1/2			1/1				1		1						1				28:52
9	尹钰琪	2/4	50			1/2		1/1	0/1					1						1	1			21:46
11	王腾爽																							04:14
12	宋逸凡																							00:00
13	李莹																							00:00
14	侯美林	6/7	85.71	1/1	1/1	1/2			2/2	1/1		1	1	2	8		1		1	1				57:53
17	齐峻萱																							00:00
18	田俊	5/10	50	1/3	1/3		2/2		1/1	0/1					9		1							60:00
20	周晓雨											1												12:38
22	张子晴																							00:00
24	张嘉欣											1												44:38
25	董柏凡	0/1			0/1										3									39:14
33	马洁	6/9	66.67	2/2	2/3	0/1	0/1	1/1	1/1			2			4		1							56:16
	合计	25/40	62.5	4/6	7/13	2/5	2/3	5/5	4/6	1/2		6	1	3	25		3		1	3	1			06:50:59

Goalkeepers		Saves / shots										TP
#	Surname and name	Tot.	%	9m	6m	Wing	7m	Fst	Brk.	FT	LD	
1	王海叶											00:00
20	周晓雨	0/9		0/2	0/3		0/1	0/1	0/2			12:38
24	张嘉欣	14/37	37.84	4/6	2/11	3/5	0/2	4/8	1/5			44:38
	合计	14/46	30.43	4/8	2/14	3/5	0/3	4/9	1/7			00:57:16

Jersey number Tot. Total shooting 6m 6m shooting 9m 9m shooting Wing Wing shooting Fst Fastbreak 7m 7m Throw
 Brk. Breakthrough LD Long distance shooting As. Assists E7 Earned 7m St. Steals 2m 2-minute suspension C7. Received 7m
 D Disqualification Dr Disqualification+Report FT Free Throw PC Pass clear chance OE Offensiven Errors TP Time played W warning
 Blk. Block



“中国体育彩票”2023年全国女子手球锦标赛

常州工学院体育馆

Preliminary



FTR
Match NO.9

上海 39.5 - 27.5 北京
(20.0-15.5)(19.5-12.0)

2023-10-16 13:00
常州工学院体育馆

Referees: 马安兴(CHN) / 巩志超(CHN)

Shot distribution by player

1.王海叶

5.常凯璇

7.赵荣鑫

8.徐慧敏

9.尹钰琪

11.王腾爽

12.宋逸凡

		1/1
		1/1

0/1	1/1	1/1

2/3		

	0/1	
		2/2

13.李莹

14.侯美林

17.齐峻萱
1miss

18.田俊

20.周晓雨
1miss

22.张子晴

24.张嘉欣

2/2		
1/1		0/1
2/2	1/1	

0/1		
	0/1	1/3
1/1		3/3

25.董柏凡

33.马洁

.合计

0/1		

		1/1
2/3		3/4

2/4		2/2
1/1	0/2	2/5
7/10	2/2	9/10

1post

1post 2miss 1block

Saves distribution goalkeepers

1.王海叶

20.周晓雨

24.张嘉欣

.合计

0/1		0/1
		0/2
0/4		0/1

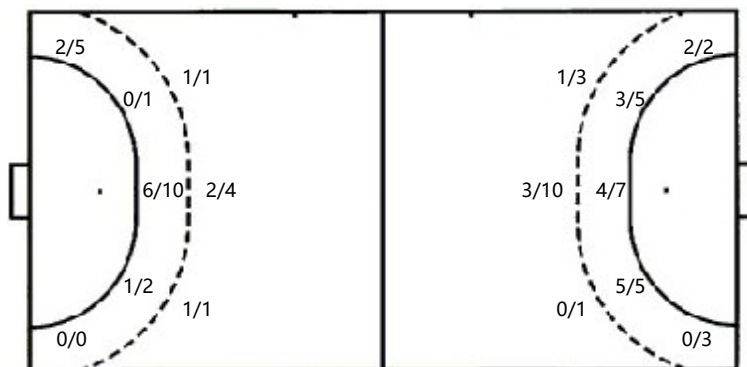
0/2	1/2	0/4
3/6	1/1	3/4
4/10	0/2	2/6

0/3	1/2	0/5
3/6	1/1	3/6
4/14	0/5	2/7

Shots by position

ATTACK

DEFENSE



7m penalties 2/3
Fastbreak 5/5
Breakthrough 4/6
Long dist. 0/0
Free Throw 1/2

7m penalties 3/3
Fastbreak 5/10
Breakthrough 6/7
Long dist. 3/3
Free Throw 0/0

Shooting statistics

Position	Goals	Save	Miss	Post	Blk	Total	%
9m	4	1			1	6	67
6m	7	5	1			13	54
边射	2	1	1	1		5	40
7m	2	1				3	67
快攻	5					5	100
突破	4	2				6	67
任意球	1	1				2	50
超远射							
合计	25	11	2	1	1	40	63

Jersey number Tot. Total shooting 6m 6m shooting 9m 9m shooting WingWing shooting Fst Fastbreak 7m 7m Throw
 Brk. Breakthrough LD Long distance shooting As. Assists E7 Earned 7m St. Steals 2m 2-minute suspension C7. Received 7m
 D Disqualification Dr Disqualification+Report FT Free Throw PC Pass clear chance OE Offensiven Errors TP Time played W warning
 Blk. Block