



“中国体育彩票”2023年全国女子手球锦标赛

常州工学院体育馆

Quarter Finals



FTR
Match NO.16

广东 34.5 - 19.5 北京
(18.5-10.5)(16.0-9.0)

2023-10-18 17:30
常州工学院体育馆

Referees: 陈昊(CHN) / 任超凡(CHN)

广东

Players		Goals/shots										Attack				Defense			Penalties			TP		
#	Surname and name	Tot.	%	9m	6m	Wing	7m	Fst.	Brk.	FT	LD	As.	PC	E7	OE	St.	C7	Blk	W	2m	D		Dr	
5	赵晔	2/5	40	2/3	0/1				0/1			1												30:00
6	张雨乐	2/2	100		1/1	1/1						1		1										15:10
7	顾天澍	1/2	50			1/1					0/1													13:13
8	唐悦	6/10	60			2/3		2/4	1/1		1/2				1	1					2			14:41
9	韦娜娜	3/6	50	0/1	3/3		0/1		0/1			3			2		1							21:25
10	董雪	3/4	75		2/3			1/1									1							14:50
11	周亚茹	1/1	100		1/1									1	1	2		3						36:12
12	李晓晴	6/7	85.71	1/2	3/3		1/1				1/1							1						30:00
13	杨慧	2/4	50		0/1			2/3							1	1								24:39
15	王慧																							00:00
16	冯颖慧											1			1									19:52
17	崔云莉	4/6	66.67	1/3	1/1			2/2																18:27
22	范春燕											1	1											27:52
23	覃元沿																							00:00
26	杨丽丽																							12:15
29	曲菁熠																							00:00
	合计	30/47	63.83	4/9	11/14	4/5	1/2	7/10	1/3		2/4	7	1	1	7	4	2	4		2				04:38:36

Goalkeepers		Saves / shots										TP
#	Surname and name	Tot.	%	9m	6m	Wing	7m	Fst.	Brk.	FT	LD	
16	冯颖慧	4/8	50	2/3	1/3				1/2			19:52
22	范春燕	6/14	42.86	3/6	1/2	0/1		0/1	1/2	1/2		27:52
26	杨丽丽	0/7		0/2	0/4		0/1					12:15
	合计	10/29	34.48	5/11	2/9	0/1	0/1	0/1	2/4	1/2		00:59:59

Jersey number Tot. Total shooting 6m 6m shooting 9m 9m shooting Wing Wing shooting Fst Fastbreak 7m 7m Throw
 Brk. Breakthrough LD Long distance shooting As. Assists E7 Earned 7m St. Steals 2m 2-minute suspension C7. Received 7m
 D Disqualification Dr Disqualification+Report FT Free Throw PC Pass clear chance OE Offensiven Errors TP Time played W warning
 Blk. Block



“中国体育彩票”2023年全国女子手球锦标赛

常州工学院体育馆

Quarter Finals



Match Team Statistics
Match NO.16

广东 34.5 - 19.5 北京
(18.5-10.5)(16.0-9.0)

2023-10-18 17:30
常州工学院体育馆

Referees: 陈昊(CHN) / 任超凡(CHN)

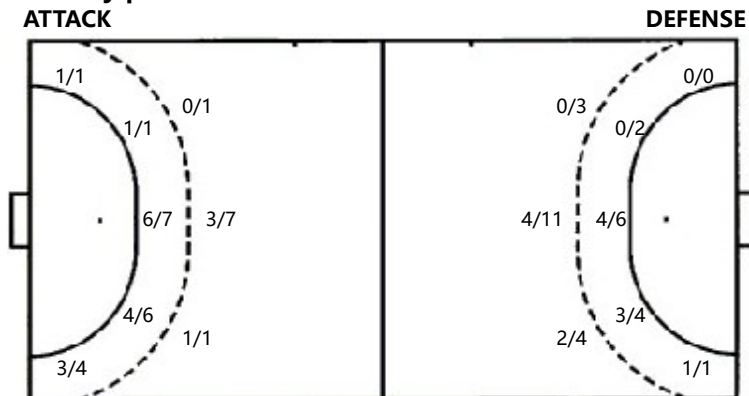
Shot distribution by player

5.赵晔 2/2 0/2 1miss 12.李晓晴	6.张雨乐 2/2 13.杨慧	7.顾天澍 1/1 15.王慧	8.唐悦 0/1 3/4 2/2 1/1 1post 1miss 16.冯颖慧	9.韦娜娜 1/2 1/2 1/1 1post 17.崔云莉	10.董雪 0/1 3/3	11.周亚茹 1/1
26.杨丽丽 1/1 5/5	29.曲菁熠 1/1 0/1 1miss	.合计 3/4 1/3 3/3 1/1 13/15 2/4 7/8 3post 5miss 1block		2/2 1/1 1post 1miss		

Saves distribution goalkeepers

16.冯颖慧 1/1 1/3 1/1 1/1 0/2	22.范春燕 1/1 0/1 0/3 1/2 1/1 2/4 1/2	26.杨丽丽 0/1 0/2 0/1 0/2 0/1 0/1	.合计 2/3 0/1 1/8 1/2 1/1 0/2 3/5 2/4 0/3
----------------------------------	---	---	--

Shots by position



Shooting statistics

Position	Goals	Save	Miss	Post	Blk	Total	%
9m	4	1	1	2	1	9	44
6m	11	2	1			14	79
边射	4	1				5	80
7m	1	1				2	50
快攻	7	1	2			10	70
突破	1	2				3	33
任意球							
超远射	2		1	1		4	50
合计	30	8	5	3	1	47	64

7m penalties 1/2	7m penalties 1/1
Fastbreak 7/10	Fastbreak 1/1
Breakthrough 1/3	Breakthrough 2/4
Long dist. 2/4	Long dist. 0/0
Free Throw 0/0	Free Throw 1/3

Jersey number Tot. Total shooting 6m 6m shooting 9m 9m shooting WingWing shooting Fst Fastbreak 7m 7m Throw
 Brk. Breakthrough LD Long distance shooting As. Assists E7 Earned 7m St. Steals 2m 2-minute suspension C7. Received 7m
 D Disqualification Dr Disqualification+Report FT Free Throw PC Pass clear chance OE Offensiven Errors TP Time played W warning



“中国体育彩票”2023年全国女子手球锦标赛

常州工学院体育馆

Quarter Finals



Match Team Statistics
Match NO.16

广东 34.5 - 19.5 北京
(18.5-10.5)(16.0-9.0)

2023-10-18 17:30
常州工学院体育馆

Referees: 陈昊(CHN) / 任超凡(CHN)

北京

Players		Goals/shots										Attack				Defense			Penalties				TP		
#	Surname and name	Tot.	%	9m	6m	Wing	7m	Fst.	Brk.	FT	LD	As.	PC	E7	OE	St.	C7	Blk	W	2m	D	Dr			
1	王海叶																							00:00	
4	姬慧慧																								00:00
5	常凯璇	2/2	100		1/1			1/1							2										17:29
7	赵荣鑫	1/1	100						1/1						1										30:06
8	徐慧敏	1/2	50	1/1	0/1										2						1				27:47
9	尹钰琪																								00:00
11	王腾爽																								00:00
13	李莹	0/1		0/1																					00:00
14	侯美林	6/16	37.5	1/6	4/7	1/1				0/2		1			2										29:26
17	齐峻萱																								00:00
18	田俊	6/12	50	4/9	0/1		1/1			1/1					5										28:37
20	周晓雨																								06:10
22	张子晴																								00:00
24	张嘉欣																								43:30
25	董柏凡	2/2	100		2/2									1		1	1			1					29:03
33	马洁	1/4	25	0/1					1/3				1	1	5										41:29
	合计	19/40	47.5	6/18	7/12	1/1	1/1	1/1	2/4	1/3		1	1	2	17	1	1			2					04:13:37

Goalkeepers		Saves / shots										TP
#	Surname and name	Tot.	%	9m	6m	Wing	7m	Fst	Brk.	FT	LD	
1	王海叶											00:00
20	周晓雨	2/6	33.33	1/3	1/2	0/1						06:10
24	张嘉欣	5/28	17.86	0/2	1/11	1/4	0/1	1/7	2/3			43:30
	合计	7/34	20.59	1/5	2/13	1/5	0/1	1/7	2/3			00:49:40

Jersey number Tot. Total shooting 6m 6m shooting 9m 9m shooting Wing Wing shooting Fst Fastbreak 7m 7m Throw
 Brk. Breakthrough LD Long distance shooting As. Assists E7 Earned 7m St. Steals 2m 2-minute suspension C7. Received 7m
 D Disqualification Dr Disqualification+Report FT Free Throw PC Pass clear chance OE Offensiven Errors TP Time played W warning
 Blk. Block



“中国体育彩票”2023年全国女子手球锦标赛

常州工学院体育馆

Quarter Finals



FTR
Match NO.16

广东 34.5 - 19.5 北京
(18.5-10.5)(16.0-9.0)

2023-10-18 17:30
常州工学院体育馆

Referees: 陈昊(CHN) / 任超凡(CHN)

Shot distribution by player

1.王海叶

4.姬慧慧

5.常凯旋

7.赵荣鑫

8.徐慧敏

9.尹钰琪

11.王腾爽

		1/1
		1/1

	1/1	

		1/1
0/1		

13.李莹

14.侯美林

17.齐峻萱

18.田俊

20.周晓雨

22.张子晴

24.张嘉欣

1/2		2/2
0/1		2/2
1/3		

0/1	1/1	3/3
1/1	0/1	
	1/1	

25.董柏凡

2post 3miss 1block
33.马洁

.合计

1post 1miss 2block

1/1		1/1

		0/1
	0/2	1/1

1/3	1/1	7/8
1/2	0/1	2/2
2/5	2/4	3/3

3post 4miss 4block

Saves distribution goalkeepers

1.王海叶

20.周晓雨

24.张嘉欣

.合计

0/1		
0/3	1/1	1/1

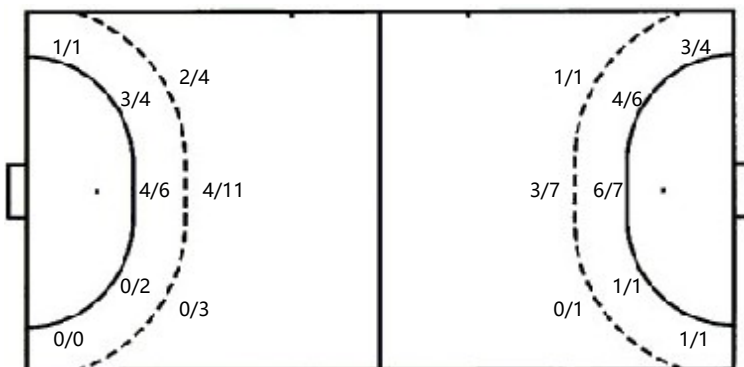
0/2	2/2	0/3
0/1		
2/12	1/1	0/7

1/4	2/3	0/3
0/1		
2/15	2/4	1/8

Shots by position

ATTACK

DEFENSE



7m penalties 1/1
Fastbreak 1/1
Breakthrough 2/4
Long dist. 0/0
Free Throw 1/3

7m penalties 1/2
Fastbreak 7/10
Breakthrough 1/3
Long dist. 2/4
Free Throw 0/0

Shooting statistics

Position	Goals	Save	Miss	Post	Blk	Total	%
9m	6	5	2	3	2	18	33
6m	7	2	2		1	12	58
边射	1					1	100
7m	1					1	100
快攻	1					1	100
突破	2	2				4	50
任意球	1	1			1	3	33
超远射							
合计	19	10	4	3	4	40	48

Jersey number Tot. Total shooting 6m 6m shooting 9m 9m shooting WingWing shooting Fst Fastbreak 7m 7m Throw
 Brk. Breakthrough LD Long distance shooting As. Assists E7 Earned 7m St. Steals 2m 2-minute suspension C7. Received 7m
 D Disqualification Dr Disqualification+Report FT Free Throw PC Pass clear chance OE Offensiven Errors TP Time played W warning