



“中国体育彩票”2023年全国女子手球锦标赛

常州工学院体育馆

Preliminary



FTR
Match NO.10

江苏 29.5 - 27.5 山东
(18.5-14.0)(8.0-12.5)(3.0-1.0)

2023-10-16 14:30
常州工学院体育馆

Referees: 王雨洋(CHN) / 王羚(CHN)

江苏

Players		Goals/shots										Attack				Defense			Penalties			TP			
#	Surname and name	Tot.	%	9m	6m	Wing	7m	Fst.	Brk.	FT	LD	As.	PC	E7	OE	St.	C7	Blk	W	2m	D		Dr		
1	胡雨诺																							00:09	
3	张海侠	2/3	66.67			0/1		2/2						1	2										48:42
5	庄红艳	2/7	28.57	0/4	1/1			1/2					1		1		1								19:57
6	刘杰	4/7	57.14	0/2	1/1		1/1		2/3							2	1								27:04
7	孙苗苗	1/3	33.33			0/2	1/1																		19:52
9	莫蒙蒙	2/3	66.67		0/1			2/2					1	1	2		1					1			45:41
10	黄慧影	6/10	60	2/5	3/3		0/1		1/1					2	5							3			44:29
12	黄霞											1			2										31:01
13	吴美琪	6/9	66.67	3/6			1/1	1/1	1/1				1		2							1			49:41
20	渠文娜	3/8	37.5		1/2	0/3	1/2	1/1							1										40:00
23	高静	0/1	0				0/1																		01:13
25	高媛媛	0/5	0	0/3	0/1	0/1									1										25:05
27	焦雅																								00:00
28	李袁梦																					1			31:52
34	金梦青	0/1	0	0/1											1										04:24
66	宋琛茜	0/1	0								0/1														20:40
	合计	26/58	44.83	5/21	6/9	0/7	4/7	7/8	4/5		0/1	2	2	4	17	2	3					6			06:49:50

Goalkeepers		Saves / shots										TP
#	Surname and name	Tot.	%	9m	6m	Wing	7m	Fst.	Brk.	FT	LD	
1	胡雨诺	2/2	100				2/2					00:09
12	黄霞	8/21	38.1	4/6	1/5	0/2	2/3	0/1	1/3		0/1	31:01
66	宋琛茜	8/17	47.06	0/1	3/5	1/2	2/3	1/2	1/4			20:40
	合计	18/40	45	4/7	4/10	1/4	6/8	1/3	2/7		0/1	00:51:50

Jersey number Tot. Total shooting 6m 6m shooting 9m 9m shooting Wing Wing shooting Fst Fastbreak 7m 7m Throw
 Brk. Breakthrough LD Long distance shooting As. Assists E7 Earned 7m St. Steals 2m 2-minute suspension C7. Received 7m
 D Disqualification Dr Disqualification+Report FT Free Throw PC Pass clear chance OE Offensiven Errors TP Time played W warning
 Blk. Block



“中国体育彩票”2023年全国女子手球锦标赛

常州工学院体育馆

Preliminary



Match Team Statistics
Match NO.10

江苏 29.5 - 27.5 山东
(18.5-14.0)(8.0-12.5)(3.0-1.0)

2023-10-16 14:30
常州工学院体育馆

Referees: 王雨洋(CHN) / 王羚(CHN)

Shot distribution by player

1.胡雨诺

3.张海侠

5.庄红艳

6.刘杰

7.孙苗苗

9.莫蒙蒙

10.黄慧影

		1/1
1/1		

1/1		
	0/1	
	0/1	1/2

		0/1
		0/1
1/1		3/4

1/2		

1/1		1/1
		0/1

2/2		4/6

12.黄霞

1miss
13.吴美琪

1miss 1block
20.渠文娜

23.高静

1post
25.高媛媛

27.焦雅

1miss 1block
28.李袁梦

		3/3
		1/1
1/1		1/2

	1/3	2/2
	0/1	
0/2		

		0/1

		0/1

34.金梦青

1post 1miss
66.宋琛茜

.合计

1post 3block

2/2	1/3	7/8
1/1	0/2	1/2
5/8	0/1	9/17

1post

1miss

4post 5miss 5block

Saves distribution goalkeepers

1.胡雨诺

12.黄霞

66.宋琛茜

.合计

2/2		

0/3	1/1	1/1
2/4	0/1	1/1
1/6	1/1	1/3

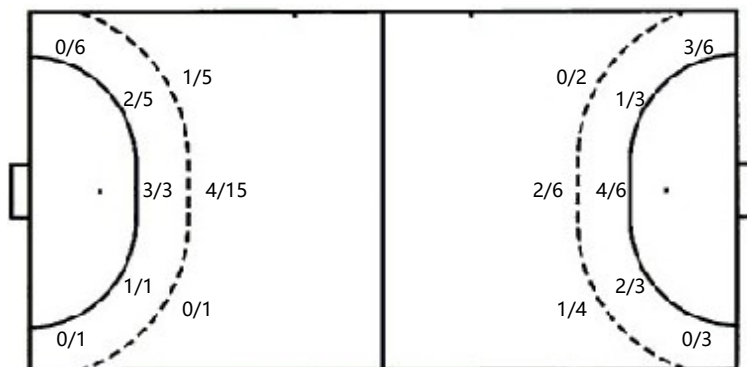
0/1		1/3
0/1		2/3
2/5	1/1	2/3

0/5	1/1	2/4
2/5	0/2	3/4
5/14	2/2	3/6

Shots by position

ATTACK

DEFENSE



7m penalties 4/7
Fastbreak 7/8
Breakthrough 4/5
Long dist. 0/1
Free Throw 0/0

7m penalties 2/8
Fastbreak 2/3
Breakthrough 6/9
Long dist. 2/2
Free Throw 0/0

Shooting statistics

Position	Goals	Save	Miss	Post	Blk	Total	%
9m	5	6	3	2	5	21	24
6m	6	2		1		9	67
边射		5	1	1		7	
7m	4	3				7	57
快攻	7	1				8	88
突破	4	1				5	80
任意球							
超远射			1			1	
合计	26	18	5	4	5	58	45

Jersey number Tot. Total shooting 6m 6m shooting 9m 9m shooting WingWing shooting Fst Fastbreak 7m 7m Throw
 Brk. Breakthrough LD Long distance shooting As. Assists E7 Earned 7m St. Steals 2m 2-minute suspension C7. Received 7m
 D Disqualification Dr Disqualification+Report FT Free Throw PC Pass clear chance OE Offensiven Errors TP Time played W warning
 Blk. Block



“中国体育彩票”2023年全国女子手球锦标赛

常州工学院体育馆

Preliminary



Match Team Statistics
Match NO.10

江苏 29.5 - 27.5 山东
(18.5-14.0)(8.0-12.5)(3.0-1.0)

2023-10-16 14:30
常州工学院体育馆

Referees: 王雨洋(CHN) / 王羚(CHN)

山东

Players		Goals/shots										Attack				Defense			Penalties			TP		
#	Surname and name	Tot.	%	9m	6m	Wing	7m	Fst.	Brk.	FT	LD	As.	PC	E7	OE	St.	C7	Blk	W	2m	D		Dr	
1	路畅																							53:46
2	林燕群	4/8	50	2/2	1/3		0/1		1/2			3			5	4	1							46:06
3	常靖悦																							00:00
4	孙玉坤	2/5	40	0/2		2/2			0/1					1	2									44:48
6	耿明德	0/1		0/1											1									10:23
9	穆庆丛	4/4	100		2/2				2/2												1			35:21
10	田秀秀	2/6	33.33	0/3			0/1		1/1		1/1				2		2							39:50
11	刘婵	4/12	33.33	1/3	1/3		1/3	0/1	1/2						2			1						26:32
14	蒋松妍																							00:00
17	高梦洁	3/6	50	0/1	1/2		1/2	1/1				1		2										32:09
20	柳李财														1	1								04:23
21	孙晓琦	1/3	33.33			1/3											1							28:24
23	徐悦														3									10:36
24	邓雅楠																							05:18
27	官蕾	3/5	60		2/2	0/1	0/1		1/1						1	1	1	4						43:09
31	赵欣瑶	2/5	40			0/3		1/1			1/1				2									37:37
	合计	25/55	45.45	3/12	7/12	3/9	2/8	2/3	6/9		2/2	4	3	19	7	4	5		1					06:58:22

Goalkeepers		Saves / shots										TP
#	Surname and name	Tot.	%	9m	6m	Wing	7m	Fst	Brk.	FT	LD	
1	路畅	16/37	43.24	6/10	2/7	5/5	1/3	1/7	1/5			53:46
24	邓雅楠	2/7	28.57	0/1	0/1		2/4	0/1				05:18
	合计	18/44	40.91	6/11	2/8	5/5	3/7	1/8	1/5			00:59:04

Jersey number Tot. Total shooting 6m 6m shooting 9m 9m shooting Wing Wing shooting Fst Fastbreak 7m 7m Throw
 Brk. Breakthrough LD Long distance shooting As. Assists E7 Earned 7m St. Steals 2m 2-minute suspension C7. Received 7m
 D Disqualification Dr Disqualification+Report FT Free Throw PC Pass clear chance OE Offensiven Errors TP Time played W warning
 Blk. Block



“中国体育彩票”2023年全国女子手球锦标赛

常州工学院体育馆

Preliminary



FTR
Match NO.10

江苏 29.5 - 27.5 山东
(18.5-14.0)(8.0-12.5)(3.0-1.0)

2023-10-16 14:30
常州工学院体育馆

Referees: 王雨洋(CHN) / 王羚(CHN)

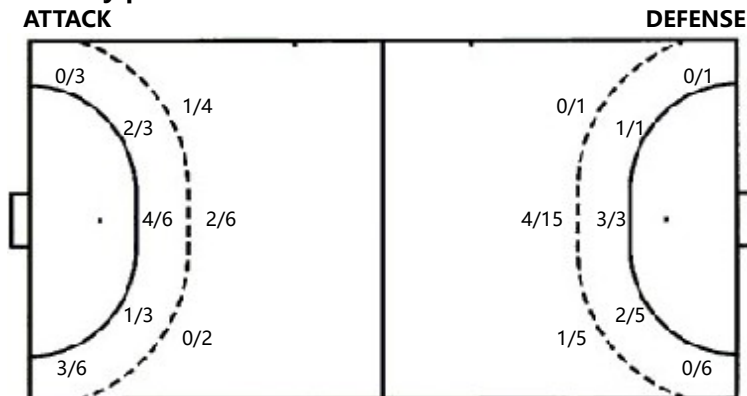
Shot distribution by player

1. 刘畅	2. 林燕群	3. 常靖悦	4. 孙玉坤	6. 耿明德	9. 穆庆丛	10. 田秀秀
	2/2 0/1 1/1		1/2 1/1		1/1 3/3	1/1 1/1 0/1
11. 刘婵	14. 蒋松妍 1post	17. 高梦洁	20. 柳李财 2post	21. 孙晓琦 1post	23. 徐悦	24. 邓雅楠 1post 2miss
1/1 0/1 0/1 1/1 0/1 0/2 0/1 2/4		0/1 1/1		1/1 0/1		
27. 官蕾	31. 赵欣瑶	. 合计		1post		
1/1 1/1 1/2	1/1	5/5 0/1 2/4 3/5 2/2 1/4 9/14 0/2 3/6				
1miss	2post 1miss	8post 4miss				

Saves distribution goalkeepers

1. 刘畅	24. 邓雅楠	. 合计
0/1 2/3 1/7 0/1 2/2 1/2 2/6 1/1 7/14	0/1 0/1 1/2 1/3	0/2 2/3 1/8 0/1 2/2 1/2 3/8 1/1 8/17

Shots by position



Shooting statistics

Position	Goals	Save	Miss	Post	Blk	Total	%
9m	3	4	2	3		12	25
6m	7	4		1		12	58
边射	3	1	2	3		9	33
7m	2	6				8	25
快攻	2	1				3	67
突破	6	2		1		9	67
任意球							
超远射	2					2	100
合计	25	18	4	8		55	45

7m penalties 2/8
Fastbreak 2/3
Breakthrough 6/9
Long dist. 2/2
Free Throw 0/0

7m penalties 4/7
Fastbreak 7/8
Breakthrough 4/5
Long dist. 0/1
Free Throw 0/0

Jersey number Tot. Total shooting 6m 6m shooting 9m 9m shooting WingWing shooting Fst Fastbreak 7m 7m Throw
Brk. Breakthrough LD Long distance shooting As. Assists E7 Earned 7m St. Steals 2m 2-minute suspension C7. Received 7m
D Disqualification Dr Disqualification+Report FT Free Throw PC Pass clear chance OE Offensiven Errors TP Time played W warning